

## SegreTECH Procedure

### Sand Separator Disconnection With Building

Building: YES

Scales: YES

Heater: YES

#### Objective:

Disconnect sand separator for removal from site.

#### Safety Hazards:

Lifting / hoisting of equipment; Pressurized equipment; Electrical

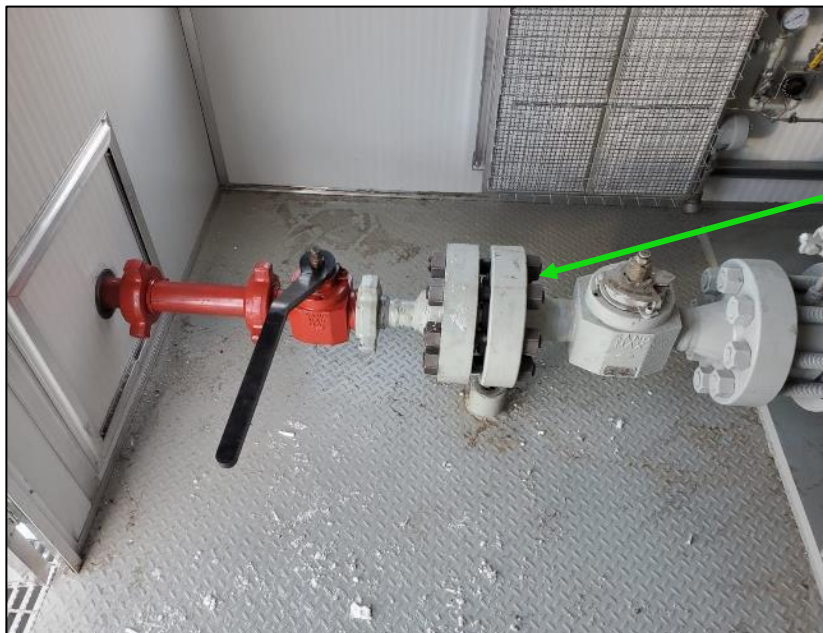
#### Equipment Required:

20 ton bottle jack; 36" pipe wrench; large adjustable (crescent) wrench; Vacuum truck to remove fluid.

**\*\* NOTE: Prior to starting the disconnect procedure, run (2) dump cycles, 15 minutes apart, to remove as much of the remaining sand as possible from the sand separator.**

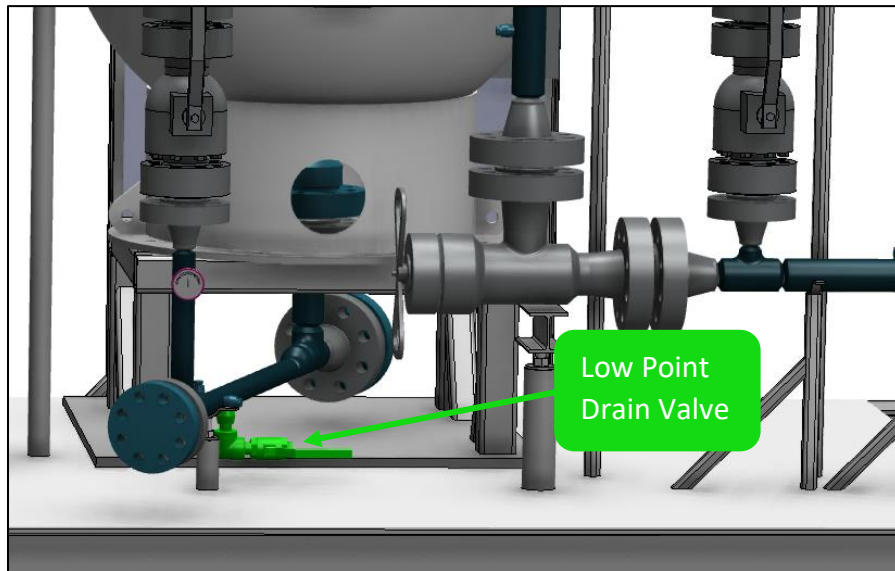
#### Procedure Steps

1. Isolate the sand separator from the wellhead but do not disconnect the Inlet or Outlet lines.
2. De-pressure the unit to the holding tank through the Sand Outlet Line. This will drain the containment sphere.

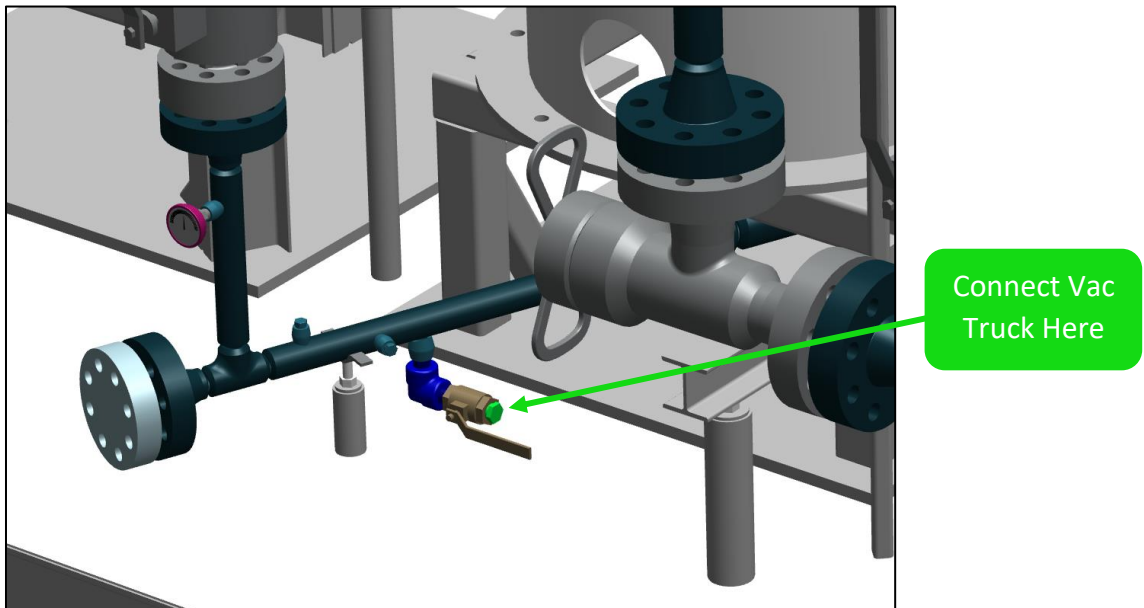


Sand Outlet Line

3. To drain fluid from the Inlet Sphere, locate the 1" low point drain valve on the transfer line underneath the spheres.



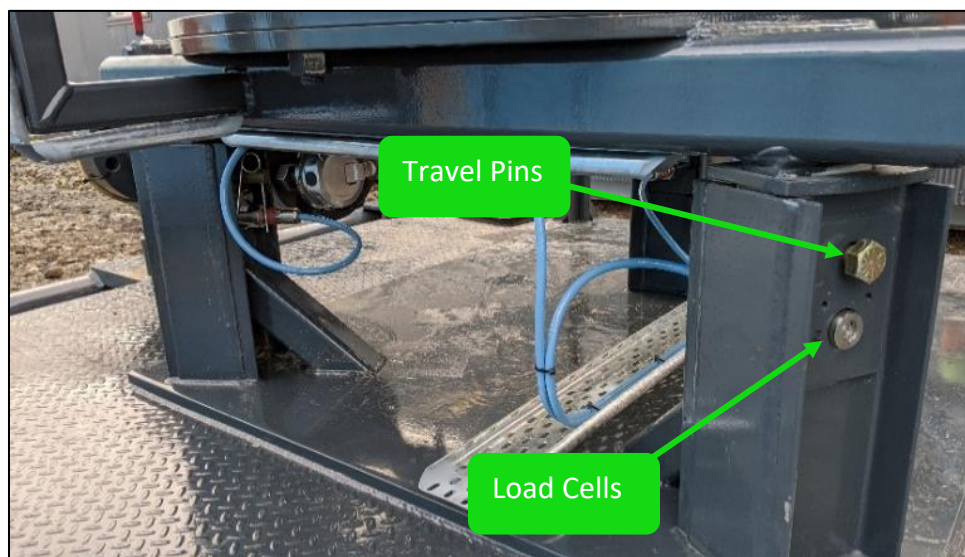
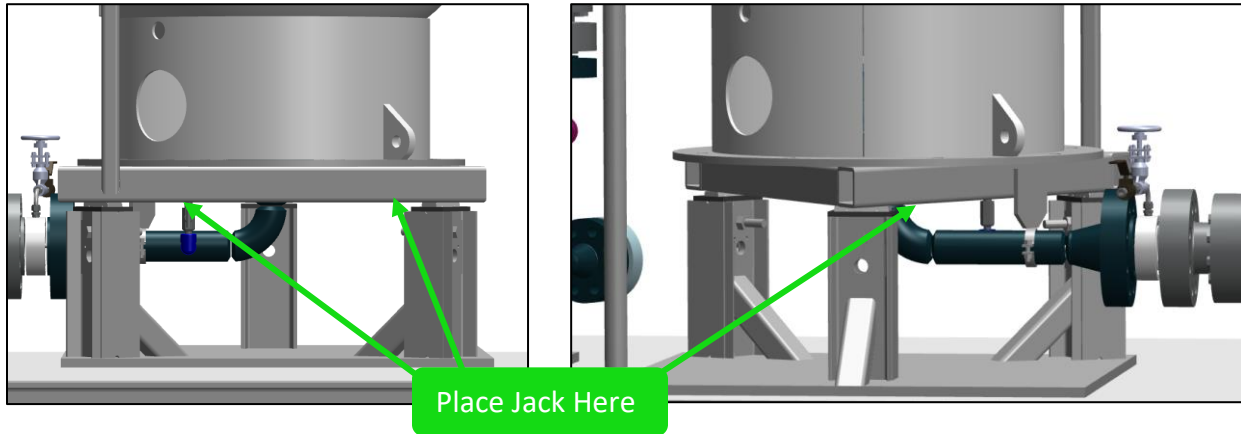
4. Remove the plug on the end of the valve and connect vacuum truck hose to the 1" NPT connection on the valve. Then open the valve.



**\*\* NOTE: If unit requires steam cleaning prior to transportation, connect steam supply to Inlet and Outlet lines leaving the Low Point Drain Valve open. (follow company specific procedures)**

5. Once the unit is completely drained, close the 1" valve and replace the plug.
6. Place a 20 ton jack next to one of the (3) legs, jack up the Containment Sphere approximately 0.25" and install the travel pin above the load cell.
7. Repeat the process at the remaining (2) legs.

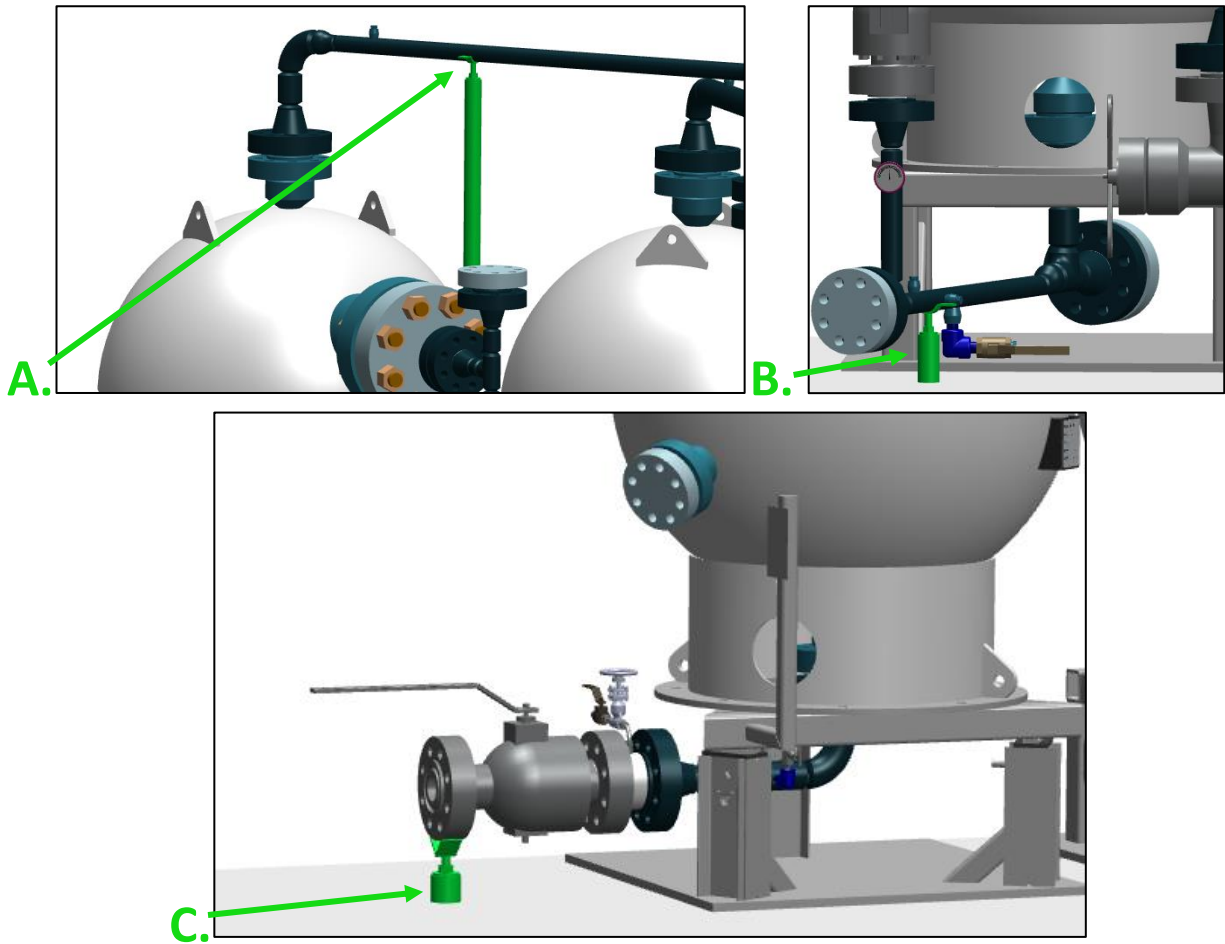
**\*\* NOTE: When jacking, take extra care to not pinch the load cell wires)**



**\*\*\* IMPORTANT \*\*\***

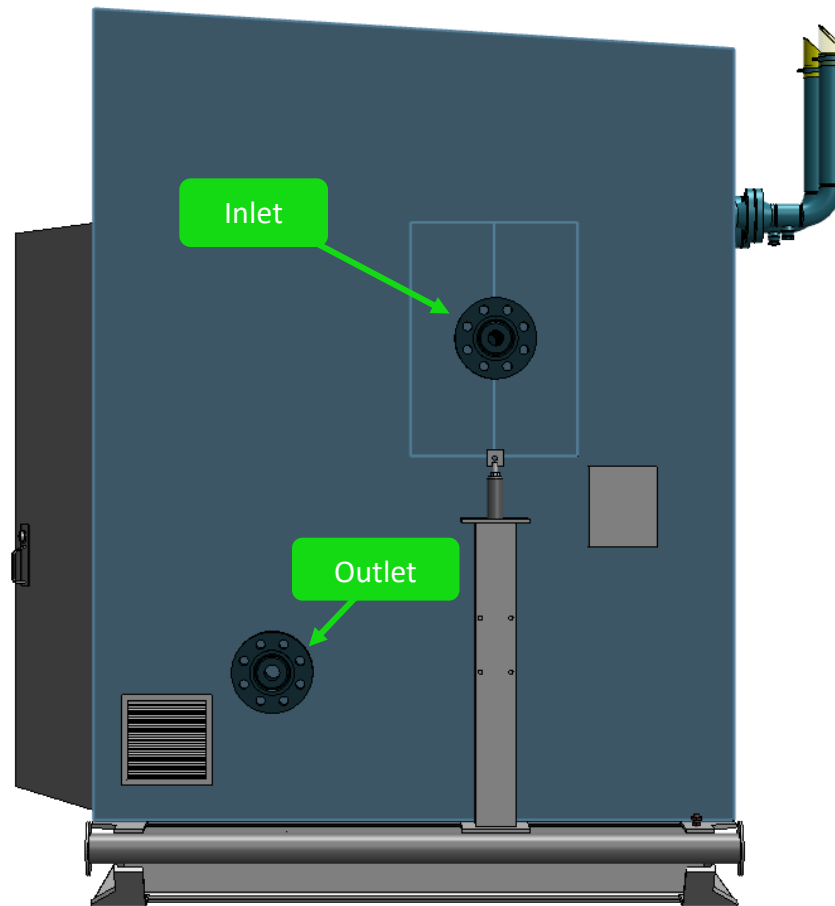
**BEFORE PROCEEDING, ENSURE THAT ALL LOAD CELLS ARE NOT CARRYING ANY WEIGHT. THE LOAD CELLS SHOULD BE LOOSE AND MOVE EASILY IN THE HOLES.**

8. Re-adjust pipe supports as follows;
- A. Turn nut down under top 2" Outlet line from Containment Sphere
  - B. Turn nut down under bottom 2" transfer line between Spheres
  - C. Rotate support under 3" Sand Outlet Valve and hold in place while turning the nut down to take weight. **NOTE: Take caution to ensure that fingers are not pinched between the valve and the pipe support.**

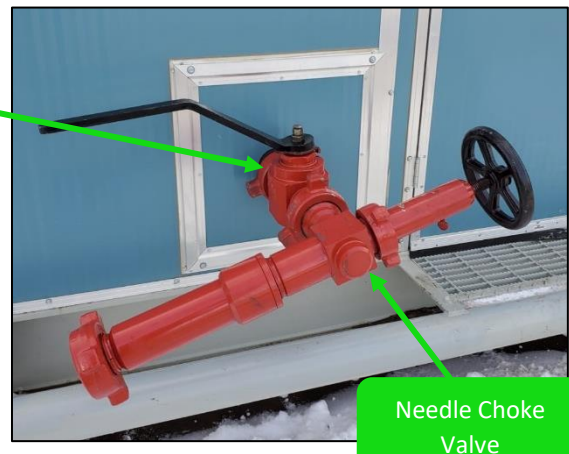
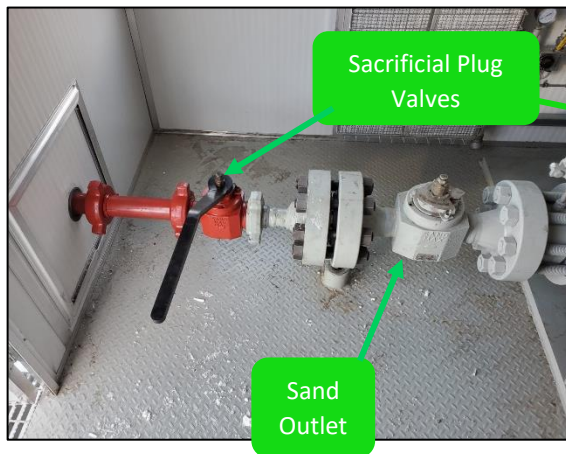


9. Double check all supports to ensure they are tight and carrying similar weight loads.

10. Disconnect and remove all on site piping from Inlet and Outlet lines.

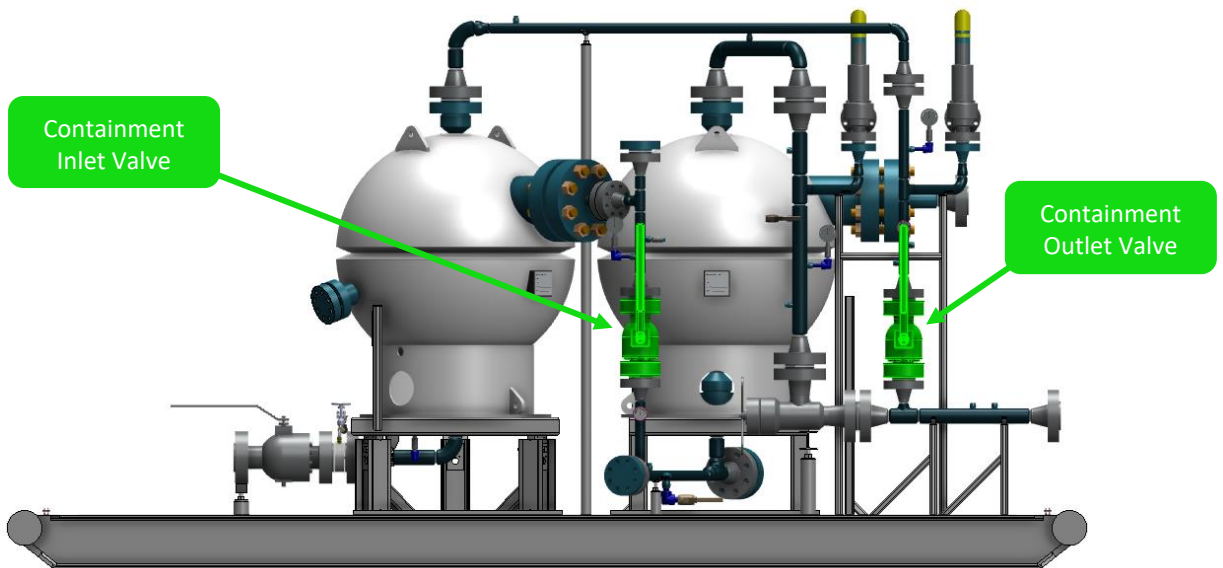


11. Remove the hammer union sacrificial plug valves and needle choke valve from the Sand Outlet line. (Flange to hammer union adapter can be left in place)





12. Disconnect power, data and ground wiring from the junction box and grounding points.
13. Disconnect fuel gas line from the heater and plug or seal the line with tape.
14. Double check that the Containment Sphere Inlet Valve and Outlet Valve are left in the open position.



15. From the inside of the building, use the SegreTECH supplied ratchet strap to tie the double doors together.



16. Sand Separator is now ready to be removed from site.

**\*\* NOTE: When loading the sand separator onto the truck/trailer, ensure that the single door faces the front of the trailer and inlet/outlet lines face the back of the trailer.**